



GLYNDON LUTHERAN CHURCH

2018
ANNUAL
REPORT

Glyndon Lutheran Church is
a Christ-centered community
church, nurturing the faith of
all generations.

AGENDA.....2

ANNUAL MEETING MINUTES.....3

PASTOR’S REPORT.....5

FAMILY MINISTER’S REPORT.....7

PRESIDENT’S LETTER.....9

FOUNDATION/MEMORIAL REPORT.....9

PROPERTIES BOARD REPORT.....9

FOOD PANTRY..... 10

MARY CIRCLE.....10

ESTHER CIRCLE.....10

NEW LIFE CENTER.....11

CHURCHES UNITED FOR THE HOMELESS.....12

YOUNG ADULTS IN GLOBAL MISSIONS (YAGM).....13

WELCA TREASURER’S REPORT.....15

PRAYER SHAWL MINISTRY REPORT.....15

EVENTIDE.....16

NWMN BISHOP’S REPORT.....18

TREASURER’S REPORT.....20

2018/2019 BUDGET.....23

2018/2019 CHILDREN’S MINISTRY BUDGET.....30

Agenda

Glyndon Lutheran Church Annual Meeting Agenda January 27th, 2019

1. Call to Order:
2. Secretary's Report
3. Treasurer's Report
4. Reports: Any Discussion
5. 2019 Budget Determination
6. New Business
 - a. Elections:
 - Officers and Council Members
 - President, Vice President, 2 At Large Council Members
 - Nominating Committee
 - Boards—Eventide, Churches United
 - Delegates for Synod Assembly (June 7th, 8th & 9th)
 - b. Harvest Supper – Date and time change?
7. Closing Prayer and Adjournment

Minutes Annual Meeting

Glyndon Lutheran Church Annual Meeting January 21st, 2018

The necessary quorum of 45 was reached and the meeting was called to order by President Deb Tollefson.

Secretary's Report-

- Report was reviewed by congregation. No discussion was initiated.
Motion to Approve: Nick Kinnen
2nd: Eric Billings
Motion carried

Treasurer's Report-

- Report was reviewed.
- Question initiated by Kim Anderson regarding the Children's Ministry Budget.
Why is there a difference between page 18 and page 22?
Kris Dernier explained - The designated funds that are matched must be used for the children's ministry. The next year's budget actually reflects how it was spent. The purchasing of Bibles was the majority of the cost. Some of the money in that fund comes from the general fund and some are designated.

No other discussion was initiated.

Motion to Approve: Deb Kinnen
2nd: Kay Hopkins
Motion carried

All other reports are printed in the Annual Report

- Request for questions in regard to these reports was asked by Deb Tollefson.
- Question initiated by Kari Myhre.
Did we have any new members this year? Reverend Kayla Billings replied that there were new members and referred the congregation to the Pastor's report.
- Question regarding the Harvest Supper.
Weren't the groceries for the supper paid for in advance? Deb Tollefson addressed this by responding that the funds for the groceries were donated.
- Question initiated by Kari Myhre.
Were there no weddings at the church in 2017 and if not, are they going somewhere else? Reverend Kayla Billings responded that since the church is so small it does not make a very conducive venue for the size of today's weddings.

2018 Budget

- TJ Hopkins addressed and shared the following:
- Page 21 contains the recap of every month on a quarter to quarter basis.
- The reason we appear to be under budget is due to a lack of funds. Every item was stripped down in order to make sure we covered the bills.
- The biggest changes are in the staffing costs.
 1. Insurance was increased due to the change in Kayla's insurance to a family plan to include coverage for the new baby.

2. The synod guidelines recommend a 2% staffing increase that was given to Lois Blattenbauer and Kris Dernier.
 3. Reverend Kayla declined a salary increase in exchange for more vacation days in 2018.
- The loan monies have all been paid back to the foundation. This was done through special donations and an anonymous matching fund.
 - Esther Ellingson pointed out that the miscellaneous section located on page 21 represents the funds for the loan coming in and going back out.
 - Question asked- Have we looked at more ways to make additional income?
 1. Council has been discussing this at their monthly meetings.
 2. We will be participating in the Glyndon Days celebration again this year. This will include the church “This and That” sale and our parking lot concessions.
 3. It has also been discussed of having some type of ticketed event in the month of April. More to follow.

Motion to approve the 2018 Budget: Kay Hopkins

2nd: Kim Anderson

Motion carried

New Business

- Discussion of ballot.
- The ballot was handed out to the congregation for review. It was indicated that we are still in need of one more Council at Large and a Synod Assembly representative.
- Kim Anderson volunteered to put her name in for the open Council at Large.
- The Synod Assembly representative was tabled at this time.
- Ron Labrensz indicated that we are also looking for one more person to assist with the activities of the Foundation. TJ Hopkins indicated he would act as a checks and balances person.

Ballot Results

Secretary - Wanda Peterson

Council At Large – Jennifer Lee

Cindy Henriksen

Kim Anderson

Churches United Representative - Eric Billings

Eventide Representative - Cindy Henriksen

Synod Assembly - **Tabled** until a later date

Foundation – Karan Ambuehl

TJ Hopkins to serve as a “checks and balances” review person.

Motion to Approve: Eric Billings

2nd: Marilyn Labrensz

Motion carried

Prayer- Reverend Kayla Billings

Motion to adjourn: Leroy Babolian

2nd: TJ Hopkins

Motion carried

Pastor's Report

Dear Partners in Ministry,

What a year 2018 was to journey through! In looking back, I find myself wondering where the time has gone. At the same time I acknowledge that together we have experienced moments of great joys as well as great sorrows, while also finding ourselves somewhere in-between at times. Reflecting back on the year 2018, it is important to lift up some of the highlights while also sharing some visioning as we move into a new year. One of the greatest challenges this year came with the number of losses we experienced in our congregation. This year we lost nine faithful members to the saints triumphant who were a part of the Glyndon Lutheran family. While we are grateful to find hope and promise in the resurrection, we must also continue to hold these families, as well as our church family in prayer, as the loss of each loved one, whether family or friend is bound to leave a hole in one's heart.

While there has certainly been loss, there has also been a great amount to celebrate. This year I officiated my first 3 weddings. John and Kayle (Fischer) Cannizzaro were married in a lovely celebration at Legacy Acres in August, Cayne and Brooke (Bjerke) Kopperud were married at the Wahpeton Golf Course in September on a beautiful early fall day, and Jordan and Jessica (Madson) Driscoll were married at Lutheran Church of the Good Shepherd in Moorhead in mid-October. It was truly a joy to not only be a part of these milestone days, but to do so in partnership with Kris at 2 of the 3.

Along with the excitement we also continued to welcome a few new brothers and sisters in Christ in to the family here at GLC through baptism. We rejoice as Harvey, Liam and Cecelia now enter this community of faith.

Spring also brought a few new fellowship opportunities. In March we gathered together for a family game day. While the attendance was a little low due to many other conflicts, we were so grateful for those who came out to play games for all ages and to create a time of fellowship. April brought about a bigger event as we hosted our first ever Festival of Tables. We had 14 different tables decorated in different themes with table hosts at each. Friends and family as well as members of GLC were invited to join together for a delicious baked potato bar (thank you Cindy Henriksen), fun fellowship and a wonderful silent auction. We are certainly looking forward to hosting a similar event in the coming year!

Faith Formation has continued for all ages. This year brought the introduction of a preschool element that was added concurrently to our day camp. We were ecstatic to have 15 kids involved in the program with 7 each from GLC and DLC and 1 from Our Savior's in Moorhead. I am grateful for the awesome help I had from our middle and high school students and am excited for another year to come this summer, this time at GLC! Adult Bible Study has been in full swing this fall. We gathered together to read through the entire book of Exodus and will now be shifting to the book of Joshua in the early spring of 2019. All are invited to join us on Sundays at 10:30am in the Triple Room.

In 2018 we also began to utilize sermon series more for preaching. Beginning in Lent we focused on the topic of *When you believe in God but...* The whole series tackled some of the tough topics that we struggle with as Christians but don't always know how to handle. Easter brought a series on various aspects of stewardship throughout our life including time, work, body and technology. Summer brought great fun as we relived some of our childhood favorites looking at Sunday School stories with an adult understanding. There was also great fun with a Disney series this fall on Wednesdays, a series on the Apostles' Creed and even one on the angels surrounding the birth of Christ. Looking ahead to 2019, new ideas are already beginning to circulate as I continue to search for new ways to connect our lives to faith.

Summer also brought another time of transition as we said goodbye to Tony Sanders, our organist. We knew his time with us would be short as a doctoral program was in the plans, but we are so grateful for all he did in his year with us including the popup choir that took place last spring. Fortunately, we were lucky to have found Josh Miller quickly to step into this role and have continued to try new things including a fun liturgy written to Christmas tunes this Advent and Christmas season.

With many other exciting things happening, it is also important to look ahead to 2019. In the year ahead, it is my hope that we as a community of faith continue to seek out ways to grow in our faith, to expand our opportunities for fellowship, and to support each other as brothers and sisters in Christ. I also look forward to finding ways that we as a community of faith can continue to be a part of the greater community of Glyndon, reaching out to serve those in our area while also spreading the love of Christ to all who may need to know about God's unending love. Please know that as a staff Kris and I are always open to hearing ideas and to helping support new ideas as they fit with the mission of GLC. Should you have something that you would like put into consideration, please do not hesitate to approach one of us or a member of council.

In closing, I want to say thank you to a few key people. First and foremost, to Kris, who is with me for many hours throughout the week as we consistently try to navigate new territory, seek to make faith relevant to our lives today, and search for ways to continue living our the mission of being a Christ-centered community church nurturing the faith of all generations. To Linda, Josh and Esther for the supportive roles they have in making sure that the church and worship function in the best possible way.

To Deb who has been the only council president I've ever known at GLC. You have been a great support and cheerleader in so many ways. I will truly miss your presence on council and am so grateful for your years of serving in this way! (Thankfully we still get you for one more year!) To all the other members who serve on our church council. While it is a big task, I am grateful for your thoughts, your leadership and your commitment. Your love for this congregation shines through as we continue to seek new ways to better serve all within and outside our doors.

And lastly, to Eric and Nathaniel. Thank you for supporting me and being a part of this church family. Thank you for the joy that you bring and that love that you so freely offer. It is because of you two and your support that I can work on being my best me.
Blessings as we enter 2019!

Respectfully submitted, Pastor Kayla Billings

Pastoral Ministry Totals

Baptisms: 3
Confirmands: 7
Weddings: 3
Funerals: 8 (1 funeral was done outside of GLC)

Members Received: 7
Members Transferred: 11
Members Removed by Death: 9

Family Minister's Report

It continues to be a joy walking with you all as your Family Minister. After some reflections on the year that made 2018, my ministry with you all can be categorized in these areas; Faith Formation, youth/family activities, and community building/involvement.

Faith Formation continues to be the area that I spend the most time preparing and leading.

With our 3-year old – 4th graders we offer Sunday and Wednesday School, learning about Bible stories, having great faith conversations, and having some fun too. These students did a great job sharing about Advent at our Advent Program this past December. In the summer we had our annual Pathways Day Camp in partnership with Dilworth Lutheran and Our Savior's in Moorhead, a huge thank you to Pastor Kayla who led our first preschool aged class during Day Camp!

With our 5th-6th graders we continue to meet with them after school and dig deeper into stories of our faith using the Connect Bible as our textbook. Pastor Kayla and I are always tweaking to make this time even better. This past year the students have helped with REACH backpacks for hunger a few times and made videos of favorite stories.

With our 7th-8th graders, Pastor Kayla and I continue to meet with them after worship on Wednesday nights. Last spring, we studied the Lord's Prayer, and this fall we looked at the importance of service and justice, which is part of the promises that were made at baptism and they will make at the rite of confirmation. We also did a unit on the liturgical year/church seasons.

With our 9th graders, Pastor Kayla and I continue to meet one Sunday a month for mini-retreats. We talk about baptism, why we have confirmation, and go through the Apostle's Creed. This past year we added a trip to Wright Funeral Home to learn about what happens after someone has passed away. Our students had great questions, and it led to great conversations about "resurrection of the dead and life everlasting." We also added a viewing of the movie "The Shack", looking at the relationship between the Triune God. Our students write faith statements from their heart and it makes me so proud each year working with our young people on how to articulate their faith.

With our 9th-12th graders, this fall I started a weekly Thursday morning, before school Bible study with some students that wanted to dig into God's word. It has been a joy reading the Bible and talking about what it means. I also make pancakes the last Thursday of the month for our senior high students, we do this in partnership with Dilworth Lutheran.

We had a lot of youth and family activities this past year. This year we continued our annual ski trip to Andes Tower Hills near Alexandria. We also had our annual trip to the Twin Cities during MEA Break to Feed My Starving Children and ValleyScare, thank you to our organist Josh who went on this trip with us as an adult leader. I got to spend some time at Camp Emmaus with our young people. I was also involved with Pathways, I was part of their interview team for their new Program Director and a part of their Program Table. A large part of youth activities this past year were based around our youth that went to the ELCA Youth Gathering in Houston. We had a great crew and partnered with Dilworth Lutheran for both bonding and traveling. We did a lot of fundraisers, thank you all for your support of our young people. We are excited about the next ELCA Youth Gathering in 2021, in Minneapolis.

I also got to be part of two weddings in 2018, though they are not youth anymore, they once were, and it was such an honor to be part of their special days with Pastor Kayla; they were John and Kayle (Fischer) Cannizzaro and Jordan and Jessica (Madson) Driscoll.

One piece of my job I truly enjoy is being part of the community and opportunities to build community. A new event that we had this past year was the Festival of Tables, thank you to all who came, helped, hosted a table, and cooked (thank you Cindy!). We had our second annual “This and That” sale during Glyndon Days, with concessions, and a special Matt Aakre concert with a root beer keg. Thank you to all who came to help set up and tear down, those who worked the event, and everyone who came, it was a great (albeit hot) day, and I got to announce the Glyndon Days parade, dreams do come true (and I am not kidding!).

We tried a new fundraising opportunity at the Scheels Arena this year, working a taco stand for a Fargo Force game and a concession stand for a concert. Pastor Kayla and I enjoyed our time with those who came to work with us, the fellowship was great, and it was nice to make a little bit of money for the general fund as well. Pastor Kayla and I participated in a few free classes offered in the community. We attended a class on suicide prevention put on by the VA, a class on opiate education with Moorhead police, and a class on Accompaniment and the Daring Way at Concordia College.

I love being a DGF Rebel and getting to game/meets/matches when I can, along with some of the concerts and plays. Pastor Kayla and I made it a point to meet with the principals at the Senior High and the Glyndon-Felton elementary this fall.

We had our first Trunk or Treat this year, thank you to all who came, decorated a car, or helped in anyway. We truly could not have done it without our Wednesday Night Dinner Crew, thank you Cindy, Janet, Jenny and Jenn! It was fun to see our community dressed up and be “spooked” by our “spooky” room and “wormy” hot dogs. The very next week we had our Harvest Supper; it was a night filled with delicious food, great conversations and fellowship by working side by side. A special thank you to all who donated money for the food, and the Faith Formation families for working.

We also had our first Advent Festival this year. This was such a fun night filled with good food, crafting, and lots of great conversations. I am very grateful for Pastor Kayla’s gifts in the crafting department. Pastor Kayla and I are looking forward to doing something in the future.

2018 brought another year with the partnership between GLC and the NWMN Synod of the ELCA for my time. During my time with the Synod, I had a Senior High Youth Gathering and a Middle School Gathering, both at Luther Crest Bible Camp in Alexandria. I attended the Fair Hills Fall Theological Event for the Synod and participated in the Synod Assembly Planning Team. I brought two youth from our synod to the Youth Leadership Summit. Another part of my work with the Synod includes some work for the Churchwide Expression of the church; I am the chair person for the SYMBOL Network (I will be passing the torch this January), I was a Property Manager at the ELCA Youth Gathering in Houston and hosted a dinner for all the ELCA Bishops during the Gathering. Bishop Larry will be retiring on August 31st and a new Bishop will be elected at Synod Assembly in June. Our partnership may change depending on who our new Bishop is and what their staffing vision will be.

Thank you to Pastor Kayla for “all the things” that we have done together this year, uff da! It is a joy to do ministry with you. Thank you to the Church Council and my Mutual Ministry Team for being there to walk with me and supporting me in so many ways. Thank you to you, for the privilege to “do” ministry with and for you, I am so grateful for each and every one of you.

Philippians 1 ³I thank my God every time I remember you. ⁴In all my prayers for all of you, I always pray with joy ⁵because of your partnership in the gospel from the first day until now, ⁶being confident of this, that he who began a good work in you will carry it on to completion until the day of Christ Jesus.

President's Letter

As another year comes to an end so does my time as council president. When I look around I see some changes but a lot is still the same.

I have been reading a book called "God has a Plan for Your Life" and I can see a lot that relates to our church as a whole and not just me. God gives all of us gifts, talents and skills. We need to stop and listen to what God is calling each of us to do.

We have Pastor Kayla and Kris to lead us but what can YOU do to help? Usher, teacher, council member, quilter, Bible study member? What tugs at your heart. Find your passion and don't be afraid to step out of your comfort zone and TRY.

God's blessing to you all,

Debra Tollefson

Foundation/Memorial Report

| Glyndon Lutheran Foundation Memorial Fund | | | | |
|--|---------------|--|--------|--------------------|
| Checkbook Balance | 1/5/18 | | | \$10,433.04 |
| | | | | |
| Income | | | | |
| Total Income | | | \$0.00 | |
| | | | | |
| Disbursements | | | | |
| Total Disbursements | | | \$0.00 | |
| | | | | |
| Checkbook Balance | 1/5/19 | | | \$10,433.04 |
| | | | | |
| Savings | | | | \$13,154.37 |
| | | | | |
| Stifel Money Market | | | | \$5,903.31 |
| | | | | |
| Total | | | | \$29,490.72 |

Properties Board Report

Projects Completed at GLC:

- The Narthex was painted.
- New daylight light bulbs are in the process of being installed throughout the church to create a consistent lighting pattern.
- Gibbs and Sons came out and inspected the boiler in the education wing as well as the furnaces in the basement in August.
- The motor in the kitchen sump pump was replaced.
- The heating element in the kitchen hot water heater was replaced after it kept flipping the breaker.

Food Pantry Report

A special thank you is extended to everyone who so graciously donated food items and money to the Food Pantry this past year. We gave out 16 baskets at Thanksgiving and 16 at Christmas.

We served 430 people this past year and 30 families, which averages 8.3 people per week and 2.5 families per month. (Please note, this does not include Thanksgiving and Christmas baskets).

Thank you again, without your support we would not be able to help these people.

Respectfully submitted, Pastor Kayla Billings

Mary Circle Report

2018 was a good year for the Mary Circle. Though we are just 6 members, we were able to complete several projects. Some of them include:

- 1) Bible Studies at members' homes. We studied women of the New Testament this past year and plan to study the books of Ruth and Esther in 2019.
- 2) Other activities include attending the outdoor concert featuring Matt Aakre, the summer women's retreat at the Langseth's lake home, and working at various funerals.
- 3) We take an offering each time we meet but did no additional fundraising in 2018. Projects we supported with our money include a farewell card and thank you gift for Lois Blattenbauer, a thank you card and gift for Christmas for our Church organist, Josh Miller, 12 schools kits for Lutheran World Relief, the purchase of a table at the Festival of Tables Fundraiser, donation for supplies for the Harvest Supper and donation for the purchases of Thanksgiving and Christmas Food baskets.

We meet the third Tuesday of the month at 6:30pm and would love to have others join us for any and all of our meetings.

Respectfully submitted, Pauline Litch and Sally Tanner

Esther Circle

Esther Circle meets the third Thursday of each month at 1:00pm. We use the book *Having a Mary Spirit* for our Bible Study. We always have a good discussion where everyone participates. If anyone is interested in joining us, you would be more than welcome!

Two of our members belong to the New Life Center Auxiliary in Fargo and at the monthly meetings contribute whatever type of donations are requested such as bedding, towels, coffee, plastic garbage bags and/or food. Our circle pays for these donations.

All of our members attended the Annual Ladies Retreat held at Lorraine Langseth's cottage on Turtle Lake July 26th. Pastor Kayla led an excellent Bible Study entitled Growing in Faith. We enjoyed a morning coffee and a potluck noon luncheon.

Two of our members attended the WELCA Conference 5 Spring Gathering which was held at North Buffalo Lutheran Church. Pastor Sue Koesterman, Executive Director of Churches United for the Homeless in

Moorhead, was the guest speaker. She informed us of the new apartment building in Moorhead which opened recently. There are 21 one-bedroom units and 20 two, three and four bedroom units. Some were currently occupied with a waiting list for the remainder of the units. She is an excellent speaker.

Our circle members participated in the church supper by donating \$300 towards the purchase of lefse. We also brought pies.

Respectfully submitted, Pat Lynde-Hemmah, Secretary

New Life Center Auxiliary

The 2018 Service Statistics are as follows:

Collectively, 33,844 nights of lodging were provided by the New Life Center in 2018. On average, 93 guests were housed nightly. These numbers include the in-house winter overflow beds.

891 unique individuals stayed in the Men's Shelter, of which 227 of them had never stayed at the New Life Center prior to 2018.

The Harbor Program, a program designed for guests in their first 30 days had 449 male participants in 2018. The Passport Program, a program that offers extended stay and additional assistance on a deeper level had 161 men participate and saw 72 men move into permanent, stable housing.

Throughout 2018, the kitchen served 68,807 meals. This averages 188 plates of food served daily.

The New Life Center is grateful for the opportunity to have the New Life Thrift Store as part of the ministry. The New Life Thrift Store provided 1,906 individuals (1,545 adults and 361 children) with clothing, furniture and other household essentials at no cost through a clothing and houseware program. This program was especially helpful for guests leaving the New Life Center and moving into permanent housing.

Together 1,266 volunteers served a total of 9,291 hours in 2018. Thank you to the many who have offered their time to support this important ministry!

Finally, the New Life Center is proud to offer Christian Growth Opportunities. Morning devotions are offered weekdays from 8:00-8:30am. Throughout the course of study we have seen the numbers grow from 8-12 attenders to no seeing 20-30 people in attendance each day. Volunteers lead weekly Bible studies on Monday and Saturday evenings. On Wednesday evenings, Rock Church holds a worship service in the Chapel. Local non-denominational churches offer rides to church each Sunday morning.

To learn more about the ministry or to get involved, feel free to contact Pat Lynde-Hemmah or Darlene Sandal or to visit the New Life Center website.

Respectfully submitted, Pat Lynde Hemmah

Churches United for the Homeless

2018 was a year of several momentous events for Churches United for the Homeless (CUFH) as the organization continued in its mission of sheltering and supporting people affected by homelessness in the greater Fargo-Moorhead area.

In 2018, the shelter was always filled to or beyond capacity. CUFH moved a total of 56 households, comprised of 53 children and 64 adults, from the shelter and into permanent housing. Additionally, the organization provided more than 70,000 meals, free of charge, to people in need.

Early 2018 saw CUFH take the lead in organizing and coordinating an emergency overflow shelter with other local and state organizations during the bitterly cold winter. In cooperation with other shelters and organizations in the area, CUFH has thus far eliminated the need for an off-site overflow shelter for the 2018-19 winter by providing overflow housing on-site.

March 15 saw the opening of the Bright Sky Apartments (BSA) complex. Located near Cashwise Foods in Moorhead, just north of the intersection of US Highway 10 and 34th Street, this brand new facility provides 43 units of permanent, supportive housing to families and individual adults. Rental assistance, case management, and support groups are among the services provided to BSA residents.

Amongst the biggest news from the year is that the close of 2018 saw a merger with the Dorothy Day House of Hospitality come to fruition. With the merger, the Dorothy Day shelter and food pantry will be operated under the control of CUFH, but both will continue to operate under the Dorothy Day name. By combining, the two organizations hope to continue the work of serving people affected by homelessness more effectively and efficiently. The merger took legal effect on January 1, 2019, and several members of the Dorothy Day House board of directors will join the board of directors for CUFH, pending elections scheduled to take place at CUFH's annual meeting in late January.

If you are interested in learning more about CUFH or in becoming more involved in its ministries, please feel free to reach out to me or visit www.churches-united.org/volunteer. CUFH was supported by 9,504 volunteer hours during 2018 and could not function without people like you. If you would like to support CUFH with the donation of supplies, current needs (as of early January) include diapers, wipes, and powdered infant formula, basic household cleaning supplies, adult-sized blankets, sheets, and pillows, and basic toiletry and hygiene products.

Respectfully submitted, Eric Billings

Young Adults in Global Missions (YAGM)

Each year, we are privileged to help support many young adults who are seeking to serve God in new ways as they open themselves up to a year of service somewhere around the globe. In 2018, 76 young adults were sent to 11 different YAGM sites, with the purpose of “being the hands and feet of Jesus in the world, providing critical support to ministries and projects in communities of need.” In each of these sites there are many ways that accompaniment takes place, with the central focus of the experience bringing mutuality, interdependence and solidarity.

One of the most recent stories of the YAGM experience comes from Eric, who is serving in Argentina. He shares:

In my mind's eye, I picture a simple Venn Diagram, the left circle inscribed with the word “YAGM”, and the right circle with the words “My Life”. A year in the past, those two circles popped into existence, and over the course of the next few months slowly fell into each other's orbit, revolving closer and closer to one another. At last, during the placement event last April they touched, and ever so slowly began to overlap each other's boundaries, that seam of the universe where YAGM and my life began to embrace one another. Those first interactions were electric, pulsing new energy into my life as I prepared for this year in service. And every time those circles sank deeper into one another I'd feel another rush of joy, or excitement, or fear. It's been over three months since I arrived at my site, a L'Arche home in Buenos Aires, Argentina, and during the last few weeks I felt something change. An imperceptible settling. And at first I didn't realize what it was, but I've come to understand that recently, acostumbrar, the circles of YAGM and my life, with one final flex of reality, sank together, and two became one. However, you see, as those two paradigms finally reached their joint resting place, I felt the luster of newness fade to the simple sheen of normalcy, and I felt . . . unsure.

What is your reaction when YAGM becomes your life, and the world-changing becomes your day-to-day? When the strangers, Daniel, Tara, and Maximiliano become uncle, sister, brother, and the beso no longer feels strange and foreign against your cheek? When you decide to live for a year on the other half of the globe, you really can't imagine where the future might pull you. I look back at myself twelve months ago, after I had clicked that “Apply Now” button on the Young Adults in Global Mission website, and I realize now that within my mind was this fantastic mural of what could be. Now, a year later, I sit at my desk in Boulogne, Buenos Aires, and find myself wondering what on Earth it is that I've agreed to, whilst the backdrop of my life here in Argentina settles more clearly into focus. When we seventy-six global volunteers agreed to take up the tarnished mantle of “missionary”, the excitement was tangible in that seminary chapel; the density of a divine spirit was profound in that space, as we laughed, cried, worried, and wondered at the year ahead. As I look down at the circle of black string tied round my wrist, symbolic both of YAGM's global unity and of the eternal, I find my thoughts settling upon two lonely disciples wandering slowly down a road, away from Jerusalem, silent and, like myself uncertain, of the journey ahead.

On that Easter day so long ago, the disciples too were in the midst of a transition [on the Road to Emmaus]. Their circles of faith and life had begun to merge with the strange first-century rabbi called Jesus. As their teacher performed signs and prophesied, their worlds sank into one another, and I can imagine their moments of excitement and joy as they followed this man, and as he changed their worlds forever. However, then at the height of his ministry, when at last the circles sank together into one, their teacher was taken from them, and publicly, brutally killed. Their journey, which had at first been so thrilling and life-changing, seemingly reached its end. And so as their hopes faded, they probably felt like their lives were again only one circle, the dimension that was Christ no longer visible to them. However then on Easter came the realization that no, this was not the end. Christ still lived, though not in the miraculous like before, but instead in the ordinary – in the daily breaking of the bread.

As YAGM and my life became one, so too the miraculous became ordinary. However, I have struggled to see Christ in the daily journey, struggled to see my teacher while walking on the road. As I go throughout my daily

routine, beneath the hot Argentine sun, I couldn't help but feel indignation for, and distance from, the divine. I, like Cleopas and his companion, in fact like many of the eleven, was frustrated that I could not see what this year was doing for me. For me . . . And then a week ago, El Arca Argentina celebrated its fifteen year anniversary. Priests, men, women, children, differently-abled, all came together to celebrate the day fifteen years ago, that a young girl named Sandra came to live with a woman named Maria Luisa. A few years later came Maxi, and then a few years after that Osvy, then Marcos, and finally this June, Dani. And along the way came untold voluntarixs, asistentes, acogidxs, and their stories too became a part of this family. That afternoon we all shared a misa "mass" together and, as a friend of the community, Padre Pepe, began to preach, someone's voice cut across his. A voice full of joy, with a laugh that we all know so well. Osvy's small frame stood up animatedly, dentures nearly popping out of his wide smile, and as he gestured to Padre Pepe, we all laughed: he had one hand on his walker, and held out the other in a request for the microphone...

And then, Osvy preached.

But what struck me deepest, as Osvy stood before us all, telling us of his thankfulness and love for El Arca, was one of his signs. He took his left hand, and held it across his body, pausing over the crook of his right elbow, and then squeezed his palm open and closed, a bit like someone pumping to take your blood pressure.

"Copi..." The name was murmured with a chuckle by many throughout the room, and at hearing so many say her name, tears filled my eyes. I bit my thumb to keep from crying. Copi is the name of a nurse who helped care for Osvy after he was abandoned at a hospital. He adores her, and she is deeply intrinsic to his story. I couldn't believe so many knew her name, one Osvy himself is unable to say. I couldn't believe that so many knew Osvy's language for her. That this man, in his twelve years at El Arca had touched the lives of so many, and I nearly cried out because in that moment El Arca showed me what this year was for, and I understood. It isn't for immense acts of giving, or for witnessing other-worldly miracles. It's simply to live with people and love them. That's what it means to accompany, nothing more, and nothing less. El Arca is my family, and I've been so humbled to be able to live with them, to be a member of this family. The word El Arca uses to describe the chicxs is acogidxs "those who are taken in", but in the end, it isn't the chicxs who are the acogidxs, we are.

When Christ came to Earth, the circle of the divine merged with the circle of the ordinary, and I believe an all-powerful God, Dios todopoderoso, took on the mantle of a man. And when that happened, when humankind and God became one, there was no revolution, and comparably fewer miracles than you might expect. But with Christ, one thing existed in abundance: love. Though at times it may seem difficult, in a world where circles are all too often pulled apart, Christ calls us to merge. To live and love in the midst of the ordinary, and the broken. For in that love we impose upon our world an extraordinary aspect of the divine. To be like God, is to merge with your fellow human beings, and to share their circle with yours. Walk with others. Break bread with others. Love others. Accompany.

Peace, grace, and may our circles be opened wide, Eric

Thanks to places like Glyndon Lutheran who support YAGM, we are able to witness people grow in faith while sharing God's love with people all around the world. If you would like to hear other stories, visit the YAGM Facebook page or check out www.elca.org and type YAGM in the search bar.

Respectfully submitted, Pastor Kayla Billings

WELCA Treasurer's Report

Treasurer's Report WELCA 2018

| | |
|------------------|-----------|
| Starting balance | \$6345.77 |
| Deposits | 8454.89 |
| Paid out | 8057.98 |
| Ending balance | \$6742.68 |

Deposits-

| | |
|-----------------------------|---------|
| Memorials for Quilters | 1000 |
| Women's Retreat Offering | 201 |
| Coffee Sales | 38.70 |
| 8 Funerals | 2979.35 |
| Harvest Supper Donations | 1651 |
| Esther Circle for Lefse | 300 |
| Harvest Supper Ticket Sales | 1822* |
| Lefse and Food Sold | 212.84 |
| Thrivent Match | 250 |

*Attendance Down- 168 Served
(Of this 40 were takeout meals)

Expenses Paid Out-

| | |
|---|---------|
| Food for Funerals | 1596.37 |
| Cinnamon Rolls | 94.10 |
| Spring Tablecloths | 12.81 |
| EcoLabs (Dishwasher) | 289.04 |
| MN Synod Assembly Registration | 65 |
| Pathways (Bible Camp) | 517.50 |
| Paint for Narthex | 330.99 |
| Donation to GLC | 2926.97 |
| Equal Exchange(coffee) | 379.70 |
| Batting for Quilters | 214.56 |
| Sheets for Quilters | 90.72 |
| Stamps | 26 |
| Supplies (Napkins, Paper Towels, Garbage Bags, Lemonade, Cleaning Supplies, Ice Melt) | 441.58 |
| Food for Harvest supper | 1029.79 |
| Tablecloths for Harvest Supper | 42.85 |

Respectfully submitted: Deb Tollefson

Prayer Shawl Ministry



*stitched in prayer
and given in love*

In September of 2018, the prayer shawl and blanket ministry began at Glyndon Lutheran Church. Its mission was to crochet or knit prayer shawls, blankets, prayer squares, or hats for those welcoming a new baby, undergoing treatments for long-term illness, or grieving the loss of a loved one. As a bonus, needlework has been found to reduce stress and boost mood, while giving members a chance for fellowship while stitching.

A small but faithful group has been meeting Wednesday evenings from 7:00 – 8:00 pm, working to build up a small inventory before they begin dispersing items. All skill levels are welcome with experts available to give instruction to those that are new to the craft.

Respectfully Submitted, Kimberly Anderson



801 Main Avenue, Suite 201
Moorhead, MN 56560
218-291-2230 | fax: 218-477-3250

December 4, 2018

To: Eventide Sponsoring Congregations
From: Jon Riewer, President & CEO
Re: 2018 Eventide Annual Meeting Notes

Greetings to all of our sponsoring church congregations. It is my pleasure to provide you with a recap of Eventide's "year in review" from our 2018 Annual Meeting held December 4 at our new corporate offices located in the Block E building at 801 Main Avenue in Moorhead. We were fortunate this year to have good weather and a strong delegate turnout. The board members and delegates received reports from Wade Stubson, Chief Financial Officer and myself along with an invocation given by Eventide Pastor Steve Streed.

Eventide has **4 Key Strategic Initiatives** approved by the board in 2016 to achieve our mission of "empowering older adults to thrive." I will highlight some of the progress we have made in each of those areas over the past year.

"Service integrity and quality care delivered in culture of compassion and pride."

- We continue to keep our employee turnover numbers well below industry averages.
- Overall staff and resident satisfaction score continue to increase and outperform industry benchmarks in the net promoter score measuring those who "would recommend Eventide."
- Eventide was recently voted the "**Best Place to Rehab**" by The Forum's "Best of the Valley." Eventide was also **voted one of the best for "Best Retirement Community," "Best Large Company to Work For," and "Best Non-Profit Organization."**
- Eventide has been selected to receive two statewide awards at the LeadingAge MN Spring Institute in February. Eventide has been selected to receive the **Stars Among Us Excellence in Practice Award in Community Collaboration** for our Block E project which has helped to spur growth in downtown Moorhead. Additionally, Eventide on 8th – Moorhead has been selected to receive the **Stars Among Us Excellence in Practice Award in Innovation** for their college partnership with Concordia where E on 8th staff serve as college faculty for the LTC Regulation Management course and host students at the Eventide campus helps future healthcare leaders learn in a real senior living environment.
- Eventide **finished the fiscal year with a modest bottom line while making additional investments in our employee wages and benefits** with special emphasis on our direct care staff. Additionally, various facility improvements were made in all 6 of our campuses.

"Intentional growth that sustains Eventide's reputation as a premier provider."

- We continued are rank as **#76 of the largest 200 not-for-profit senior living systems in the country** as measured each year through a study by LeadingAge/Ziegler. Eventide employs more than **1,400 staff and serve approximately 1,200 older adults every day across 6 senior campuses in 5 communities.**
- Eventide has outgrown its present leased corporate office space and began evaluation options for a permanent location. We are pleased to be part of a **new mixed use building named Block E (after Eventide) to be located on the corner of 8th Street and Main Avenue in downtown Moorhead.** The new location will allow us to own the 2nd floor with options to purchase the rest of the building at a later date should our needs dictate.

"Flexible, innovative options that people need and want."

- Eventide has a unique partnership with Bethany (Fargo, ND) and Knute Nelson (Alexandria, MN) in *Ethos*, a Medicare-certified home health company serving the Fargo-Moorhead area and also added hospice services within the last year. This new company continues to grow and currently serves about 100 home health care clients and over 40 hospice patients throughout the Fargo-Moorhead area.
- **Planning has started on a renovation and addition for senior housing on our Eventide on Eighth campus.** Plans will include new apartment additions, underground parking, new kitchen/restaurant, lounge, and other amenities for senior apartments. Additionally, a memory care assisted living will be added as well. We are hopeful to have financing and planning completed for a 2019 project start.


"Community connectedness and contribution."

- Eventide was pleased to present our **"Leaders in Living"** thought leader series again last fall at the Avalon Event Center in Fargo featuring **Niki Kapsambelis, the author of the book "The Inheritance: A family on the Front Lines of the Battle Against Alzheimer's."** Joining Kapsambelis were Karla De Moe Hornstein and Deb DeMoe, family members from the featured DeMoe family. The event was again moderated by WDAY's Kevin Wallevand and was very well attended providing a great discussion with Kapsambelis and the DeMoe family about their family fight with the most devastating form of Alzheimers.
- As mentioned last year, Eventide lead a community discussion called **"Silos to Circles"** funded by a grant from the Margarete Cargill Foundation designed to bring about discussion and awareness of the various providers of formal and informal services to older adults in the region. Through Eventide's work and leadership, the Clay County Silos to Circles group has received a **\$150,000 grant to bring better information and coordination tools to Clay County with special focus on our rural areas.** We believe this grant will create some outstanding training, coordination, and information to all Clay County seniors seeking out information for any number of questions about services available to keep people aging well in their communities.
- During the 2017-18 fiscal year, Eventide provided at **total charitable benefit to our communities of \$1,311,143 or about 1.6% of our total revenue** through cost of care write-offs and donations. This does not include donation of staff time and use of facilities to various community groups by Eventide.

Our annual meeting is also a time of change on our board of directors. Completing their board service to Eventide this year were **Lisa Borgen, Moorhead At-Large (3 years); John Erickstad, Devils Lake Community (5 years); and Vern Nolting, Bethesda Lutheran Church (9 years).** These individuals have served Eventide with committed and loyal service to the organization and the residents and communities we serve. With these retirements from the board, we are pleased to announce that **Rob Bye, Moorhead and Laura Goldhahn, Fargo,** have accepted our call and were voted on to our board at the Annual Meeting. Our deepest thanks to our outgoing board members for their service and welcome to both of our newest board members.

On behalf of the board, staff, and residents of Eventide, we thank our sponsoring congregations for the continued prayers and support we have been blessed to receive over the last 7 decades of Eventide's history. We continue to be grateful for the many ways in which all of you continue to support our mission and look forward to continuing to grow our mission through our Lutheran heritage and values.

Sincerely,



Jon Riewer, President & CEO



*Ordination of Pastor Linda Molitor,
now serving the Oklee Parish*

2018 Bishop's Report to the NW MN Synod, Evangelical Lutheran Church in America

**For Annual Meetings of the Congregations
From Bishop Lawrence R. Wohlrahe**

MATCHING GIFT CHALLENGE: As 2018 began, the synod announced a unique, one-year matching gift challenge. Thanks to a generous donor from the synod, all gifts received during 2018 for the *Northwestern Minnesota Synod Fund for Leaders Endowment* (to provide scholarships for seminary students from our synod) or the *NW MN Synod Next Generation Fund* (to make available educational debt-reduction grants to first-call pastors serving in the synod) are being matched, dollar-for-dollar. As this report was being written, the people of the synod have contributed over \$73,000 to the Fund for Leaders and nearly \$16,000 to the Next Generation Fund, just during 2018. **Gifts received for either fund that are postmarked by December 31, 2018, will be eligible for matching funds from our donor.**

RESPONDING TO 2017 FINANCIAL SHORTFALL: In February, the Synod Council learned that reductions in 2017 mission support giving by 80 congregations left the synod with a \$110,000 financial shortfall. The council revised the 2018 synod budget, eliminating one full-time assistant to the bishop position. With regret, we said farewell to Pr. Paul Erdal, assistant to the bishop, on August 1, and were delighted that he was subsequently called as lead pastor at Calvary Lutheran Church, Perham. To offset the loss of Pr. Erdal, Pr. Keith Zeh transitioned from being Director for Evangelical Mission (DEM) for both the NW MN and EaND Synods to serving only the NW MN Synod, effective August 1, 2018. Although Pr. Zeh's position is funded by the ELCA churchwide organization, he functions as both DEM and an assistant to the bishop. In addition, synod staff have cut back on travel (substituting teleconferences for face-to-face meetings, when possible) and partnering more with conference deans. The Lutheran Youth Organization also moved its youth gatherings to Luther Crest Bible Camp instead of hotel venues.

YOUTH GATHERED FOR LEARNING, WORSHIP AND SERVICE: The synod Senior High Youth Gathering in April and the Middle School Gatherings in November involved hundreds of youth. Over 800 high schoolers and adult leaders from the NW MN Synod journeyed to Houston, Texas, June 27-July 2 for the ELCA Youth Gathering under the theme "This Changes Everything." Participants gathered for a "synod day" of learning, fellowship and worship, followed by a "service day" with projects scattered across the greater Houston area.



CALLED TO SERVE: During this year, 22 congregations of the synod welcomed 17 new pastors and deacons. Five of these pastors were ordained to serve their first Calls in our synod:

- Pr. Caitlin Jensen, First of Karlstad;
- Pr. Laurie Albertson, Lakes Area Ministry Partners (Detroit Lakes area); Bethlehem of Ulen (starting Jan. 1);
- Pr. Linda Molitor, Oklee Parish;
- Pr. René Mehlberg, Trinity of Laporte; and
- Pr. Scott Hoecker, Esther of Parkers Prairie.

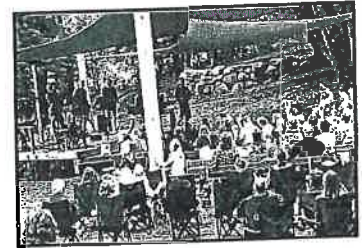
In addition, 20 lay persons serve as synodically authorized ministers (SAMs), and 16 folks are in the ELCA candidacy process in our synod, preparing to become pastors or deacons.



SYNOD STAFF TRANSITIONS: During 2018 the synod staff experienced a number of changes besides Pr. Erdal's departure and Pr. Zeh's transition to full-time service. Shirleen Wyland (*pictured here*), the synod's longest-serving staff person, retired in July after 26 ½ years as administrative secretary, and John Bell left his full-time position as communications and events coordinator at the end of October. Anticipating staff changes that will accompany election of a new bishop in 2019, two persons were invited to serve in *interim* capacities through 9/31/2019: Pr. Karla Mickelson, interim administrative secretary and Taylor Rodriguez, interim half-time events coordinator.

OPPORTUNITIES TO LEARN AND GROW: Our synod sponsored (or co-sponsored with the EaND Synod) a host of learning events to inspire and equip Christians for faithful, fruitful ministries. Dr. Curtiss DeYoung of the Minnesota Council of Churches spoke on "All Are Welcome" at the Synod Theological Day in April, and Dr. Gordon Straw of the Lutheran School of Theology in Chicago addressed "Reconciliation: Unbinding Hearts" at Fair Hills in September. A cadre of 37 persons representing 14 congregations participated in "Practicing Resurrection: Experiencing Vitality" events and coaching, and a series of "God's Story - Our Stories" mission interpreter training workshops were offered in the autumn. In early October, Rev. Ron Gluskamp keyed the annual stewardship event, and Dr. David Anderson led a "Shepherding of Souls" workshop at Zion of Warroad. School for Lay Ministry classes on "Revelation" and the "Life, Theology and Legacy of Dietrich Bonhoeffer" were taught by Dr. Craig Koester of Luther Seminary and Dr. Lori Brandt Hale of Augsburg University, respectively. Folks from the NE MN and NW MN Synods participated on October 25 in "Respectful Conversations" regarding the Enbridge Line 3 oil pipeline.

ELCA PARTNERSHIP GRANTS: During 2018, six mission development, redevelopment and congregational vitality grants were received from our ELCA churchwide organization by the following congregations/ministries of our synod: Peoples Church, Bemidji; Shalom, Alexandria; First and Lutheran Campus Ministry, Bemidji; First Evangelical, Parkers Prairie; Good Shepherd, Moorhead; and Calvary, Alexandria (*whose "Calvary at the Lake" summer worship/outreach is pictured here*).



PREPARING TO CALL A NEW BISHOP IN 2019: At the beginning of 2018, people of the synod participated in "The Landscape," a comprehensive survey looking ahead to the election of a new synod bishop in 2019. In June, synod assembly-goers discussed a Ministry Site Profile to guide the process of surfacing potential candidates for bishop, and members of the bishop election committee were announced. "Pre-nominations" for bishop are being submitted (until February 12, 2019), and individuals pre-nominated will share biographical information with members of the synod. More information about the steps in the bishop election process is available at <http://nwmnsynod.org/the-2019-bishop-election/>.

THANKS FOR THE JOURNEY: This is my final year-end report to the people of our synod. Along with my wife Joy and all the staff who've served with me since 2007, I thank you deeply. Truly we have "walked together" (the meaning of the Greek word *synod*) through all the peaks and valleys of these twelve years. Being a synod bishop means seeing the church at its worst - and at its best. **Thankfully, God's church at its best is always what remains most clearly in my memory.** When I begin the adventure of retirement next September 1, I will treasure this slice of eternity that we have shared - with profound gratitude and sturdy hope for the mission of God that still beckons us all.

Your brother in Christ, Bishop Larry Wohltrabe

Treasurer's Report

01/07/19
Accrual Basis

Glyndon Lutheran Church
Income & Expense
January through December 2018

| | <u>Jan - Dec 18</u> |
|--|---------------------|
| Ordinary Income/Expense | |
| Income | |
| 43400 · Offering | |
| 1018 · Offering-Youth | 25.00 |
| 43410 · Miscellaneous | 4,419.98 |
| 43412 · Synod Salary Reimbursement | 14,550.40 |
| 43413 · Adult Education | 1,400.00 |
| 43414 · Mission Possible Bucket | 1,403.37 |
| 43415 · Improvements | 3,061.00 |
| 43440 · Food Pantry | 1,195.00 |
| 43450 · General Fund | 176,209.62 |
| 43460 · Memorial / Honor of Fund | 2,180.00 |
| 43480 · Sunday School Offering | 221.63 |
| 43490 · Children's Ministry | 8,485.37 |
| 43500 · Youth- Bible Camp | 75.00 |
| Total 43400 · Offering | <u>213,226.37</u> |
| Total Income | 213,226.37 |
| Expense | |
| 1000 · Stewardship | |
| 1100 · ELCA Benevolence | |
| 1120 · Synod Missions | 300.00 |
| 1130 · Global Missions | 300.00 |
| 1140 · Pathways | 300.00 |
| Total 1100 · ELCA Benevolence | <u>900.00</u> |
| 1200 · Non ELCA Benevolence | |
| 1210 · Eventide | 300.00 |
| 1220 · REACH | 325.00 |
| 1230 · Churches Untied | 300.00 |
| 1250 · Food Pantry | 799.65 |
| Total 1200 · Non ELCA Benevolence | <u>1,724.65</u> |
| 1500 · Synod Assembly | 390.00 |
| Total 1000 · Stewardship | <u>3,014.65</u> |
| 2000 · Worship & Music | |
| 2100 · Worship | |
| 2110 · Copyright License | 275.00 |
| 2120 · Worship & Music Supplies | 692.49 |
| 2130 · Accompanist | 8,850.00 |
| Total 2100 · Worship | <u>9,817.49</u> |
| 2200 · Supplies | |
| 2210 · Communion | 255.91 |
| Total 2200 · Supplies | <u>255.91</u> |
| Total 2000 · Worship & Music | 10,073.40 |
| 4000 · Education | |
| 4100 · Children's Ministry | |
| 4110 · Sunday School/Bibles | 287.86 |
| 4130 · Day Camp | 500.00 |
| 4100 · Children's Ministry - Other | 627.45 |
| Total 4100 · Children's Ministry | <u>1,415.31</u> |
| 4200 · Faith Formation | |
| 4210 · Faith Formation 5/6-7/8 | 248.98 |
| Total 4200 · Faith Formation | <u>248.98</u> |
| 4300 · Adult | 831.92 |
| Total 4000 · Education | <u>2,496.21</u> |

3:50 PM
 01/07/19
 Accrual Basis

Glyndon Lutheran Church Income & Expense January through December 2018

| | Jan - Dec 18 |
|--|--------------|
| 6200 · Youth Ministry | |
| 6220 · Sr. High Gathering | 384.43 |
| 6260 · Youth Ministry Expenses | 314.93 |
| Total 6200 · Youth Ministry | 699.36 |
| 7000 · Properties | |
| 7100 · Employees/Services | |
| 7120 · Grounds Keeper | 1,050.00 |
| 7130 · Snow Removal | 2,405.00 |
| Total 7100 · Employees/Services | 3,455.00 |
| 7200 · Insurance | |
| 7210 · Property Insurance | 3,988.99 |
| 7220 · Workers Comp | 1,041.00 |
| Total 7200 · Insurance | 5,029.99 |
| 7300 · Utilities | |
| 7310 · Electricity | 2,803.85 |
| 7320 · Gas | 3,975.05 |
| 7330 · Garbage & Sewer | 1,693.38 |
| 7340 · Solid Waste Tax | 1,520.00 |
| 7350 · Phone & internet | 1,893.46 |
| Total 7300 · Utilities | 11,885.74 |
| 7400 · Maintenance | |
| 7405 · Improvements | 1,789.75 |
| 7400 · Maintenance - Other | 500.22 |
| Total 7400 · Maintenance | 2,289.97 |
| 7500 · Office | |
| 7510 · Supplies | 612.39 |
| 7520 · Technology | |
| 7522 · Website Hosting | 810.15 |
| 7523 · Copier | 2,737.82 |
| 7524 · Vanco | 484.50 |
| Total 7520 · Technology | 4,032.47 |
| 7530 · Postage | 811.44 |
| Total 7500 · Office | 5,456.30 |
| 7900 · GLC Memorials | |
| 7901 · Memorials | 1,125.50 |
| 7900 · GLC Memorials - Other | 25.60 |
| Total 7900 · GLC Memorials | 1,151.10 |
| Total 7000 · Properties | 29,268.10 |
| 8000 · Staff | |
| 8100 · Salaries | |
| 8110 · Pastor | |
| 8111 · Salary | 29,199.43 |
| 8112 · FSA Dependent Care | 0.00 |
| 8114 · FSA Health | 0.00 |
| 8115 · Social Security | 3,610.76 |
| 8116 · Housing | 18,000.00 |
| 8117 · Pension | 5,081.04 |
| 8118 · Insurance | 16,513.32 |
| 8119 · pension self 5% | 0.27 |
| Total 8110 · Pastor | 72,404.82 |

3:50 PM
 01/07/19
 Accrual Basis

Glyndon Lutheran Church
Income & Expense
 January through December 2018

| | Jan - Dec 18 |
|--|--------------|
| 8120 - Family Minister | |
| 8121 - Salary | 42,864.48 |
| 8122 - State Withholding | 0.00 |
| 8123 - Federal Withholding | 0.00 |
| 8124 - Social Security SELF | 0.00 |
| 8125 - Social Security Church | 3,279.12 |
| 8127 - Pension | 4,286.40 |
| 8128 - Insurance | 8,482.56 |
| 8129 - FSA Health | 0.00 |
| 8137 - pension self 5% | 0.00 |
| Total 8120 - Family Minister | 58,912.56 |
| 8130 - Office Administrator | |
| 8131 - Salary | 8,783.68 |
| 8132 - State Withholding | 0.00 |
| 8133 - Federal Withholding | 0.00 |
| 8134 - Social Security SELF | 0.00 |
| 8135 - Social Security Church | 621.00 |
| Total 8130 - Office Administrator | 9,404.68 |
| 8140 - Treasurer | 2,100.00 |
| 8141 - Financial Secretary | 815.00 |
| 8150 - Custodian | |
| 8151 - Salary | 3,600.00 |
| Total 8150 - Custodian | 3,600.00 |
| Total 8100 - Salaries | 147,237.06 |
| 8200 - Expenses | |
| 8220 - Business Miles | |
| 8221 - Pastor | 2,400.00 |
| 8222 - Family Minister | 1,800.00 |
| Total 8220 - Business Miles | 4,200.00 |
| 8230 - Continuing Ed | |
| 8231 - Pastor | 1,381.30 |
| 8232 - Family Minister | 554.83 |
| Total 8230 - Continuing Ed | 1,936.13 |
| 8240 - Rostered Leaders Retreat | 131.94 |
| 8242 - FCTE | 225.00 |
| Total 8200 - Expenses | 6,493.07 |
| 8000 - Staff - Other | 0.00 |
| Total 8000 - Staff | 153,730.13 |
| 9300 - Miscellaneous | 3,348.18 |
| Total Expense | 202,630.03 |
| Net Ordinary Income | 10,596.34 |
| Other Income/Expense | |
| Other Expense | |
| 9000 - Other Expense | |
| 9200 - Miscellaneous Charges | 897.40 |
| Total 9000 - Other Expense | 897.40 |
| Total Other Expense | 897.40 |
| Net Other Income | -897.40 |
| Net Income | 9,698.94 |

2018 Year End and 2019 Proposed Budget

| | 2018 Proposed | 2018 Actual YTD | 2019 Proposed |
|--|-----------------|-----------------|-----------------|
| 1000 · Stewardship | | | |
| 1100 · ELCA Benevolence | | | |
| 1120 · Synod Missions | 500.00 | 300.00 | 500.00 |
| 1130 · Global Missions | 500.00 | 300.00 | 500.00 |
| 1140 · Pathways | 500.00 | 300.00 | 500.00 |
| 1150 · Other ELCA Benevolence | | | |
| Total 1100 · ELCA Benevolence | 1,500.00 | 900.00 | 1,500.00 |
| 1200 · Non ELCA Benevolence | | | |
| 1210 · Eventide | 500.00 | 300.00 | 500.00 |
| 1220 · REACH | 500.00 | 325.00 | 500.00 |
| 1230 · Churches United | 500.00 | 300.00 | 500.00 |
| 1231 · Dorothy Day House | | | |
| 1250 · Food Pantry* | | 799.65 | |
| Total 1200 · Non ELCA Benevolence | 1,500.00 | 1,724.65 | 1,500.00 |
| 1500 · Synod Assembly* | 360.00 | 390.00 | 450.00 |
| 1600 · Stewardship Supplies and Events | | | |
| Total 1000 · Stewardship | 3,360.00 | 3,014.65 | 3,450.00 |

1120-1140 and 1210-1230 – The goal for giving to the benevolences is \$500 per organization. Giving for the year is less due to the cash shortfall we experienced throughout the year.

1250 – The amount listed under food pantry is not money actually set aside in the budget. Instead, this money is given to the General Fund in various forms including memorials. The money is tracked for tax purposes and then set aside in a fund reserved specifically for the food pantry. This money is then used to help replenish the supply when it is low.

1500 – Synod Assembly has been increased this year as the assembly is longer. This year we will elect a bishop and that process takes place over three days as opposed to the standard two. The costs are not definitive yet for this event but we are anticipating the rise with the additional meals that will be provided as part of the assembly.

| 2000 · Worship & Music | 2018 Proposed | 2018 Actual YTD | 2019 Proposed |
|---|----------------------|------------------------|----------------------|
| 2100 · Worship | | | |
| 2110 · Copyright License | 260.00 | 275.00 | 275.00 |
| 2120 · Worship & Music Supplies | 500.00 | 692.49 | 700.00 |
| 2130 · Accompanist | 9,000.00 | 8,850.00 | 9,300.00 |
| 2140 · Organ & Piano Repairs* | 850.00 | | 850.00 |
| 2100 · Worship - Other | | | |
| Total 2100 · Worship | 10,610.00 | 9,817.49 | 11,125.00 |
| 2200 · Supplies | | | |
| 2210 · Communion | 250.00 | 255.91 | 250.00 |
| Total 2200 · Supplies | 250.00 | 255.91 | 250.00 |
| 2300 · Adult Choir | | | |
| 2310 · Adult Choir Music | | | |
| 2320 · Adult Choir Director | | | |
| 2330 · Adult Choir Accompanist | | | |
| Total 2300 · Adult Choir | - | - | - |
| 2400 · Children's Choir | | | |
| 2410 · Children's Choir Music | | | |
| 2420 · Children's Choir Director | | | |
| Total 2400 · Children's Choir | - | - | - |
| 2000 · Worship & Music - Other | | | |
| Total 2000 · Worship & Music | 10,860.00 | 10,073.40 | 11,375.00 |

2140 – The organ and piano were not tuned until just before Christmas this year due to the scheduling complications that arose with Nelson Organ and Repair. The bill will be charged to the 2019 year. We will still plan to go forward with the bi-annual tuning for both of these instruments in 2019.

| 3000 · Evangelism | 2018 Proposed | 2018 Actual YTD | 2019 Proposed |
|--------------------------------|----------------------|------------------------|----------------------|
| 3100 · Community Postcards | 25.00 | | 25.00 |
| 3200 · New Member Sunday | | | |
| 3000 · Evangelism Other | | | |
| Total 3000 · Evangelism | 25.00 | - | 25.00 |

| 4000 · Education** | 2018 Proposed | 2018 Actual YTD | 2019 Proposed |
|---|----------------------|------------------------|----------------------|
| 4000 · Education - Other | | | |
| 4100 · Children's Ministry | | | |
| 4110 · Sunday School | 100.00 | 287.86 | 100.00 |
| 4120 · Vacation Bible School (Pre-K Day Camp) | 100.00 | | 100.00 |
| 4130 · Day Camp | 100.00 | 500.00 | 100.00 |
| 4100 · Children's Ministry - Other | | 627.45 | |
| Total 4100 · Children's Ministry | 300.00 | 1,415.31 | 300.00 |
| 4200 · Faith Formation | | | |
| 4210 · Faith Formation 5/6-7/8 | 100.00 | 248.98 | 100.00 |
| Total 4200 · Faith Formation | 100.00 | 248.98 | 100.00 |
| 4300 · Adult Education* | 250.00 | 831.92 | 250.00 |
| Total 4000 · Education | 650.00 | 2,496.21 | 650.00 |
| 6200 · Youth Ministry** | | | |
| 6210 · Jr. High Gathering (synod) | 100.00 | - | 100.00 |
| 6220 · Sr. High Gathering (synod) | 100.00 | 384.43 | 100.00 |
| 6230 · Bible Camp | - | | |
| 6240 · Summer Trip Chaperones | 100.00 | | 100.00 |
| 6250 · ELCA Youth Network -Extravaganza | - | - | |
| 6260 · Youth Ministry Expenses | 100.00 | 314.93 | 100.00 |
| 6270 · College Age Gathering | - | | |
| 6200 · Youth Ministry-Other | | | |
| Total 6200 · Youth Ministry | 400.00 | 699.36 | 400.00 |

**4000 and 6200 – The Children’s Ministry and Youth Ministry categories are not truly reflective of money spent from the general fund. There is an additional budget enclosed that includes a more detailed accounting that will begin in 2019. The reason for this separate budget sheet has to do with designated donations. Thanks to Microsoft and the match program they offer to their employees, along with members who are excited about what is happening at GLC, we receive a designated offering for our Children’s After School program. This money can only be used for specific programming. As a result, we must keep some money in the general fund in case a cost arises that is outside of the restricted access. With that being said, the money designated in 4000, 4100, 4200 and all of 6200 came from the Children’s Ministry Budget.

4300 – Adult Education is not truly adult education. This is the line where additional expenses incurred by Pastor Kayla are tracked. The money to pay for these expenses does not come from the General Fund but instead comes from the money Pastor Kayla receives as honorariums that are turned back over to the church to help account for professional expenses that are not otherwise accounted for in the budget. For example, this is where additional books and continuing education expenses are tracked, all paid for by the honorarium money Pastor Kayla has received from weddings, funerals, etc. The above and beyond \$1000 in 8231 was also accounted for using the honorarium money. The GLC general fund only covered the budgeted \$1,000 for continuing education.

| 7000 · Properties | 2018 Proposed | 2018 Actual YTD | 2019 Proposed |
|--|----------------------|------------------------|----------------------|
| 7100 · Employees/Services | | | |
| 7120 · Grounds Keeper | 1,050.00 | 1,050.00 | 1,050.00 |
| 7121 · Opener | | | |
| 7130 · Snow Removal | 2,000.00 | 2,405.00 | 2,000.00 |
| Total 7100 · Employees/Services | 3,050.00 | 3,455.00 | 3,050.00 |
| 7200 · Insurance | | | |
| 7210 · Property Insurance | 3,980.00 | 3,988.99 | 4,000.00 |
| 7220 · Workers Comp | 1,041.00 | 1,041.00 | 1,041.00 |
| 7230 · Background Checks | 150.00 | - | 150.00 |
| Total 7200 · Insurance | 5,171.00 | 5,029.99 | 5,191.00 |
| 7300 · Utilities | | | |
| 7310 · Electricity | 4,000.00 | 2,803.85 | 4,000.00 |
| 7320 · Gas | 4,000.00 | 3,975.05 | 4,000.00 |
| 7330 · Garbage & Sewer | 1,900.00 | 1,693.38 | 1,900.00 |
| 7340 · Solid Waste Tax | 1,500.00 | 1,520.00 | 1,550.00 |
| 7350 · Phone & Internet | 2,400.00 | 1,893.46 | 2,000.00 |
| Total 7300 · Utilities | 13,800.00 | 11,885.74 | 13,450.00 |
| 7400 · Maintenance & Improvements | | | |
| Painting (and prep) | | | |
| Hallway Repair | | | |
| Outside steps | | | |
| SE Sump Pump | | | |
| 7405 · Improvements* | 10,000.00 | 1,789.75 | 10,000.00 |
| 7400 · Maintenance-Other | | 500.22 | |
| Total 7400 · Maintenance & Improvements | 10,000.00 | 2,289.97 | 10,000.00 |
| 7500 · Office | | | |
| 7510 · Supplies | 1,500.00 | 612.39 | 1,000.00 |
| 7520 · Technology | | | |
| 7521 · Computer | | | 250.00 |
| 7522 · Website Hosting* | 800.00 | 810.15 | 825.00 |
| 7523 · Copier | 3,000.00 | 2,737.82 | 2,500.00 |
| 7524 · Vanco | 450.00 | 484.50 | 500.00 |
| 7520 · Other | | | |
| Total 7520 · Technology | 4,250.00 | 4,032.47 | 3,825.00 |
| 7530 · Postage | 1,200.00 | 811.44 | 1,000.00 |
| 7500 · Office - Other | | | |
| Total 7500 · Office | 6,950.00 | 5,456.30 | 5,825.00 |
| 7900 · GLC Memorials | | 1,151.10 | |
| Total 7900 · GLC Memorials | | 1,151.10 | |
| Total 7000 · Properties | 38,971.00 | 29,268.10 | 37,516.00 |

7405 – Maintenance has \$10,000 placed in the budget each year. However, it is important to note that we cannot make improvements with the budgeted money if the money isn't actually there. Therefore, while we budget for this to be permitted, the reality is that should large needs arise, a fundraiser will likely still need to be put into place to help cover costs to avoid taking money from other funds like the Window Fund.

Also important for us to consider. The Parke Ave Construction project is likely to happen this coming summer. This means that come 2020 we will need to be prepared for the special assessments that will come for the two lots that we own (where the church sits and the green space to the north). While we are exempt from property taxes as a non-profit, we are not exempt from special assessments.

7522 – Website Hosting is a number that fluctuates based on the transactions for online giving. While we would like to know what this number is going to be, it is hard to predict as it is charged on a per transaction basis. The fact that the number is higher is a good thing as it means people are giving online. One thing that can help with this is minimize transactions. For example, if one has the means to make a monthly donation instead of weekly, we are only charged for one transaction as opposed to four. While we would love to see this transition, we only encourage it if it is something that works for your giving.

7900 – Memorials operate on an in and out financial system. All money is funneled through the general fund, similar to the food pantry, and then disbursed to a restricted account. This ensures that givers receive the tax credit for giving, but also helps to make sure that the money is being spent as desired.

| 8000 · Staff | 2018 Proposed | 2018 Actual YTD | 2019 Proposed |
|-------------------------------|----------------------|------------------------|----------------------|
| 8100 · Salaries | | | |
| 8110 · Pastor | | | |
| 8111 · Salary | 35,474.00 | 29,199.43 | 38,330.00 |
| 8114 · FSA Health | | | |
| 8115 · Social Security | 3,610.76 | 3,610.76 | 2,932.24 |
| 8116 · Housing | 11,725.43 | 18,000.00 | 12,378.67 |
| 8117 · Pension | 4,719.94 | 5,081.04 | 5,070.87 |
| 8118 · Insurance | 15,600.00 | 16,513.32 | 16,513.32 |
| 8110 · Other | | 0.27 | |
| Total 8110 · Pastor | 71,130.13 | 72,404.82 | 75,225.10 |
| 8120 · Family Minister | | | |
| 8121 · Salary | 42,864.48 | 42,864.48 | 44,150.41 |
| 8122 · State Withholding | | | |
| 8123 · Federal Withholding | | | |
| 8124 · Social Security SELF | | | |
| 8125 · Social Security Church | 3,279.13 | 3,279.12 | 3,377.51 |
| 8127 · Pension | 4,286.45 | 4,286.40 | 4,415.04 |
| 8128 · Insurance | 7,853.52 | 8,482.56 | 8,482.56 |
| Total Family Minister | 58,283.58 | 58,912.56 | 60,425.52 |
| 8130 · Office Administrator | | | |
| 8131 · Salary | 11,350.00 | 8,783.68 | 5,000.00 |
| 8132 · State Withholding | | | |

| | | | |
|--|-------------------|-------------------|-------------------|
| 8133 · Federal Withholding | | | |
| 8134 · Social Security SELF | | | |
| 8135 · Social Security Church | 868.28 | 621.00 | |
| 8136 · Pension | | | |
| Total 8130 · Office Administrator | 12,218.28 | 9,404.68 | 5,000.00 |
| 8140 · Treasurer / Financial Secretary | | | |
| 8140 · Treasurer | 2,100.00 | 2,100.00 | 2,100.00 |
| 8141 · Financial Secretary | 825.00 | 815.00 | 825.00 |
| Total Treasurer/Fin. Sec | 2,925.00 | 2,915.00 | 2,925.00 |
| 8150 · Custodians | | | |
| 8151 · Salary | 3,600.00 | 3,600.00 | 3,600.00 |
| 8150 · Other | | | |
| Total 8150 - Custodians | 3,600.00 | 3,600.00 | 3,600.00 |
| Total 8100 · Salaries | 148,156.99 | 147,237.06 | 147,175.62 |
| 8200 · Expenses | | | |
| 8220 · Business Miles | | | |
| 8221 · Pastor | 2,400.00 | 2,400.00 | 2,400.00 |
| 8222 · Family Minister | 1,800.00 | 1,800.00 | 1,800.00 |
| 8223 · Office Administrator | | | |
| Total 8220 · Business Miles | 4,200.00 | 4,200.00 | 4,200.00 |
| 8230 · Continuing Education | | | |
| 8231 · Pastor* | 1,000.00 | 1,381.30 | 1,000.00 |
| 8232 · Family Minister | 750.00 | 554.83 | 750.00 |
| 8233 · Office Administrator | | | |
| Total 8230 · Continuing Ed | 1,750.00 | 1,936.13 | 1,750.00 |
| 8240 · Rostered Leaders Retreat | 400.00 | 131.94 | 400.00 |
| 8242 · FCTE | 225.00 | 225.00 | - |
| 8250 · Pulpit Supply | 250.00 | | 300.00 |
| Total 8200 · Expenses | 6,825.00 | 6,493.07 | 6,650.00 |
| Total 8000 · Staff | 154,981.99 | 153,730.13 | 153,825.62 |

8100 – Salaries and increases for 2019 were based on the synod guidelines for NWMN.

At the 2019 Synod Assembly we will elect a new bishop. Bishop Larry has served as bishop for the last 12 years and will now be retiring. The contract that we have with the synod for services of Kris as LYO coordinator will be renewed and contracted through January 2020. With that being said, should the new bishop choose to go a different route, there is a potential that contract may be terminated with a 60-day notice given to GLC.

8130 – The office manager position is currently be attended to by Linda Pavola. She helps with some office duties as well as the food pantry 6 hours per week. This is the amount that we have budgeted for 2019 as we continue to assess what may be needed for this position in the future.

8231 – See note on 4300

| 9000 · Miscellaneous | 2018 Proposed | 2018 Actual YTD | 2019 Proposed |
|--|----------------------|------------------------|----------------------|
| 9200 · Misc. charges* | | 897.40 | |
| 9300 · Miscellaneous* | | 3,348.18 | |
| 9400 · Call Committee / Moving Expense | | | |
| Total 9000 · Miscellaneous | - | 4,245.58 | - |

9200 – The Misc. Charges is where things like taxes, shipping, etc are accounted for on certain orders.

9300 – Miscellaneous is the money that comes in and goes right back out. One example of this is the Harvest Supper money. For Harvest Supper, the money is funneled through the General Fund to make sure proper tracking is done for tax purposes. It is then paid out to the WELCA group, so the groceries and other supplies can be purchased. In years past, this is also how money for specified fundraisers like Fund-A-John and the Furnace Match were accounted for within the budget.

| TOTAL RECAP | 2018 Proposed | 2018 Actual YTD | 2019 Proposed |
|------------------------------|----------------------|------------------------|----------------------|
| Total 1000 · Stewardship | 3,360.00 | 3,014.65 | 3,450.00 |
| Total 2000 · Worship & Music | 10,860.00 | 10,073.40 | 11,375.00 |
| Total 3000 · Evangelism | 25.00 | - | 25.00 |
| Total 4000 · Education | 650.00 | 2,496.21 | 650.00 |
| Total 6200 · Youth Ministry | 400.00 | 699.36 | 400.00 |
| Total 7000 · Properties | 38,971.00 | 29,268.10 | 37,516.00 |
| Total 8000 · Staff | 154,981.99 | 153,730.13 | 153,825.62 |
| Total 9000 · Miscellaneous | - | 4,245.58 | - |
| GRAND Total Expenses | 209,247.99 | 203,527.43 | 207,241.62 |

Children's Ministry Budget

| | 2018 Proposed | 2018 Actual | 2019 Proposed |
|---|-----------------|-----------------|-----------------|
| 4000 · Education** | | | |
| 4000 · Education - Other | | | |
| 4100 · Children's Ministry | | | |
| Christmas/Advent Festival | | | 300.00 |
| 4110 · Faith Formation | 425.00 | 287.86 | 100.00 |
| SPARK Bibles (Baptism) | | | 100.00 |
| Connect Bibles (3rd Grade) | | | 100.00 |
| Bible Activity (3rd Grade) | | | 25.00 |
| Worship Resources - Children's Message, etc. | | | 100.00 |
| Christmas Program (Snacks, Costumes, Activity, etc) | | | 100.00 |
| 4120 · Vacation Bible School (Pre-K Day Camp) | 200.00 | | 200.00 |
| 4130 · Day Camp | 500.00 | 500.00 | 500.00 |
| 4100 · Children's Ministry - Other | 350.00 | 627.45 | |
| Total 4100 · Children's Ministry | 1,475.00 | 1,415.31 | 1,525.00 |
| 4200 · Faith Formation | | | |
| 4210 · Faith Formation 5/6-7/8 | - | 248.98 | 400.00 |
| First Communion Supplies and Books | | | 100.00 |
| Total 4200 · Faith Formation | - | 248.98 | 500.00 |
| | - | | |
| Total 4000 · Education | 1,475.00 | 1,664.29 | 2,025.00 |
| 6200 · Youth Ministry** | | | |
| 6210 · Jr. High Gathering (synod) | 600.00 | - | 600.00 |
| 6220 · Sr. High Gathering (synod) | 500.00 | 384.43 | 500.00 |
| 6230 · Bible Camp | - | | |
| 6240 · Summer Trip Chaperones | 600.00 | | 350.00 |
| 6250 · ELCA Youth Network -Extravaganza | - | - | |
| 6260 · Youth Ministry Expenses | 1,100.00 | 314.93 | 500.00 |
| Service Plunge (5th-8th Grade) | | | 250.00 |
| Message Bibles (12th Grade) | | | 100.00 |
| High School Breakfast (9th-12th Grade) | | | 250.00 |
| Confirmation Banquet (10th Grade) | | | 110.00 |
| 6270 · College Age Gathering | | | |
| 6200 · Youth Ministry-Other | | | |
| Total 6200 · Youth Ministry | 2,800.00 | 699.36 | 2,660.00 |
| TOTAL 4000 and 6200 | 4,275.00 | 2,363.65 | 4,685.00 |